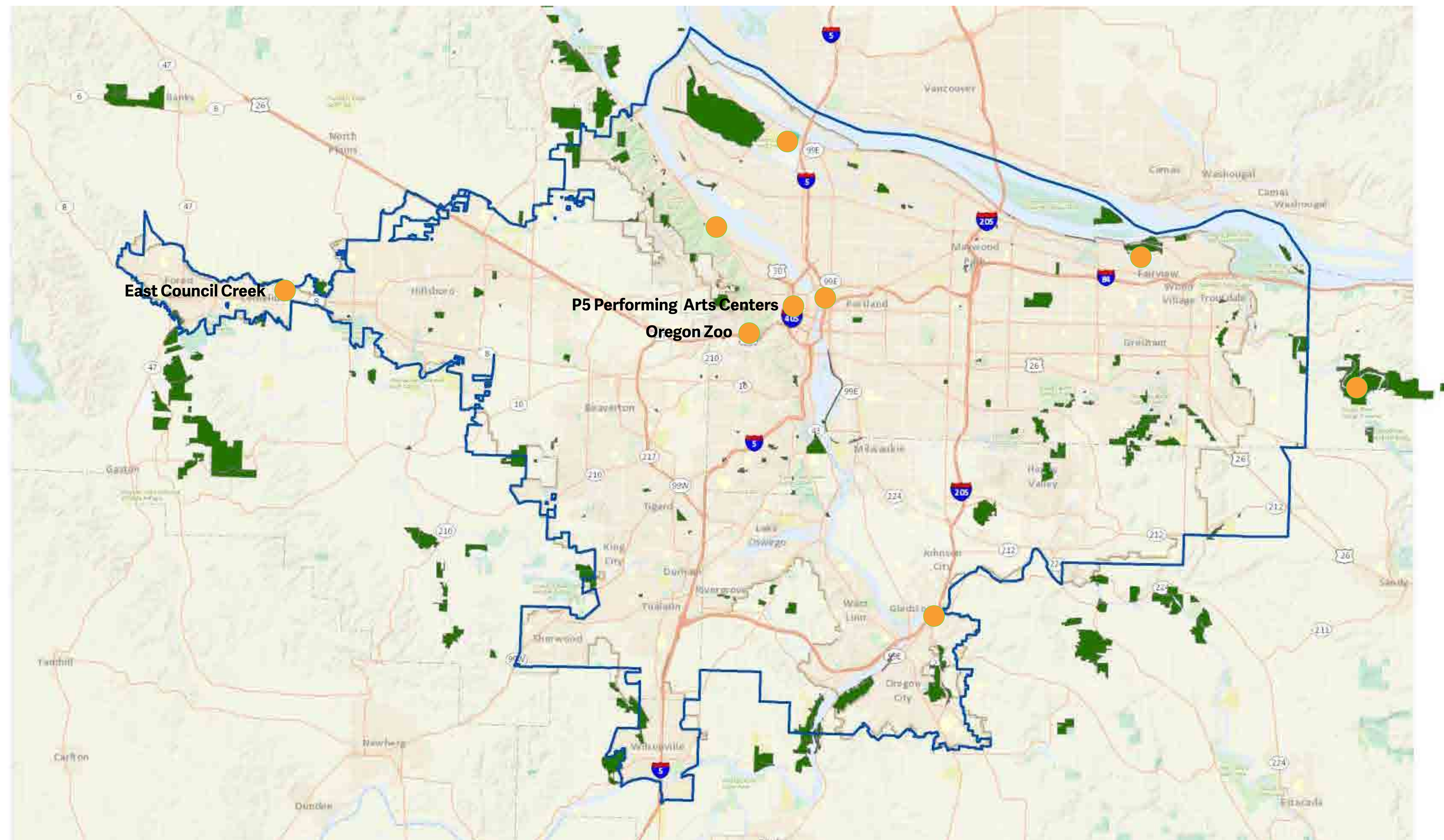




GABBERT BUTTE NATURE PARK Hello, we're Metro

The greater Portland region

Metro serves more than 1.5 million people who make their home in the 24 cities and three counties at the urban heart of Oregon. Voters have asked Metro to help with the challenges and opportunities that cross city and county lines.



Parks and nature



Metro manages 17,000 acres of parks, trails and natural areas across the Portland metropolitan region, from wild forests like Chehalem Ridge to beloved destinations like Oxbow Regional Park.

Regional planning



Metro works collaboratively with cities, counties and transportation agencies to decide how to invest in transportation funding and how to smartly grow the urban growth boundary.

Garbage and recycling



Have stuff to get rid of? Metro helps people find out how and where to recycle or safely dispose of hazardous waste and how to prep their haul to save money and time.

Visitor venues



Arlene Schnitzer Concert Hall



Oregon Convention Center



Portland Expo Center



Oregon Zoo

If you've been to the Oregon Zoo, a show at the Schnitz, a home and garden show at the Oregon Convention Center or a trade show at Portland Expo Center, then you've been Metro's guest.



GABBERT BUTTE NATURE PARK Parks and Nature

Metro protects water quality, restores fish and wildlife habitat and creates opportunities to enjoy nature close to home through a connected system of parks, trails and natural areas.

The Parks and Nature System Plan lays out Metro's mission and role in the region. The plan guides our decisions and provides a framework for how Metro's work and portfolio complement the broader regional network of parks, natural areas and trails, and strengthen our local partners.

Places



Nature parks



Regional trails



Natural areas



Historic cemeteries



Recreation areas



Habitat preserves

What we do

- Acquire land to protect habitat and water quality
- Restore and take care of the land
- Plan places for people to experience to nature
- Operate parks, trails and natural areas
- Invest in and partner with community
- Work with volunteers
- Teach about nature

Nature park activities

