



Metro

CITY OF GRESHAM

GABBERT BUTTE NATURE PARK

Trail alternatives

Activity:

Please review the three trail network alignments shown to the right. Please use a green sticky note to tell us what you like, and an orange sticky note to share any concerns.

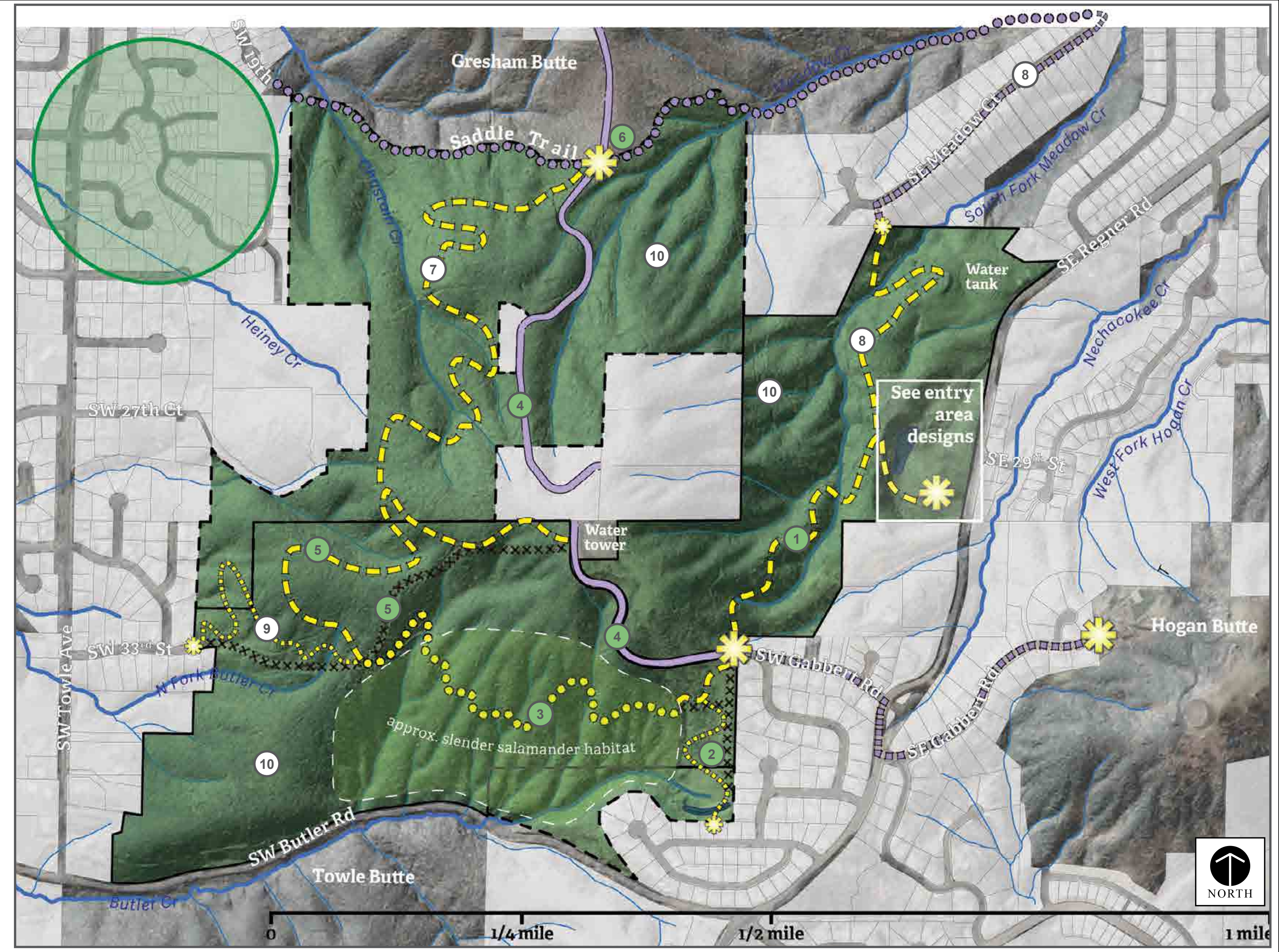
Key similarities:

- 1 New trail connection between entry area and existing Gabbert Butte trails.
- 2 Reroute trail to neighborhood.
- 3 Realign /repair existing trail.
- 4 No change to trail in existing right-of-way.
- 5 Reroute trail, and decommission trail tread. (Route to remain as utility maintenance access as needed.)
- 6 New connection(s) to existing intersection at Saddle Trail and improved way-finding signs.

Trail Alignments 1

Key differences:

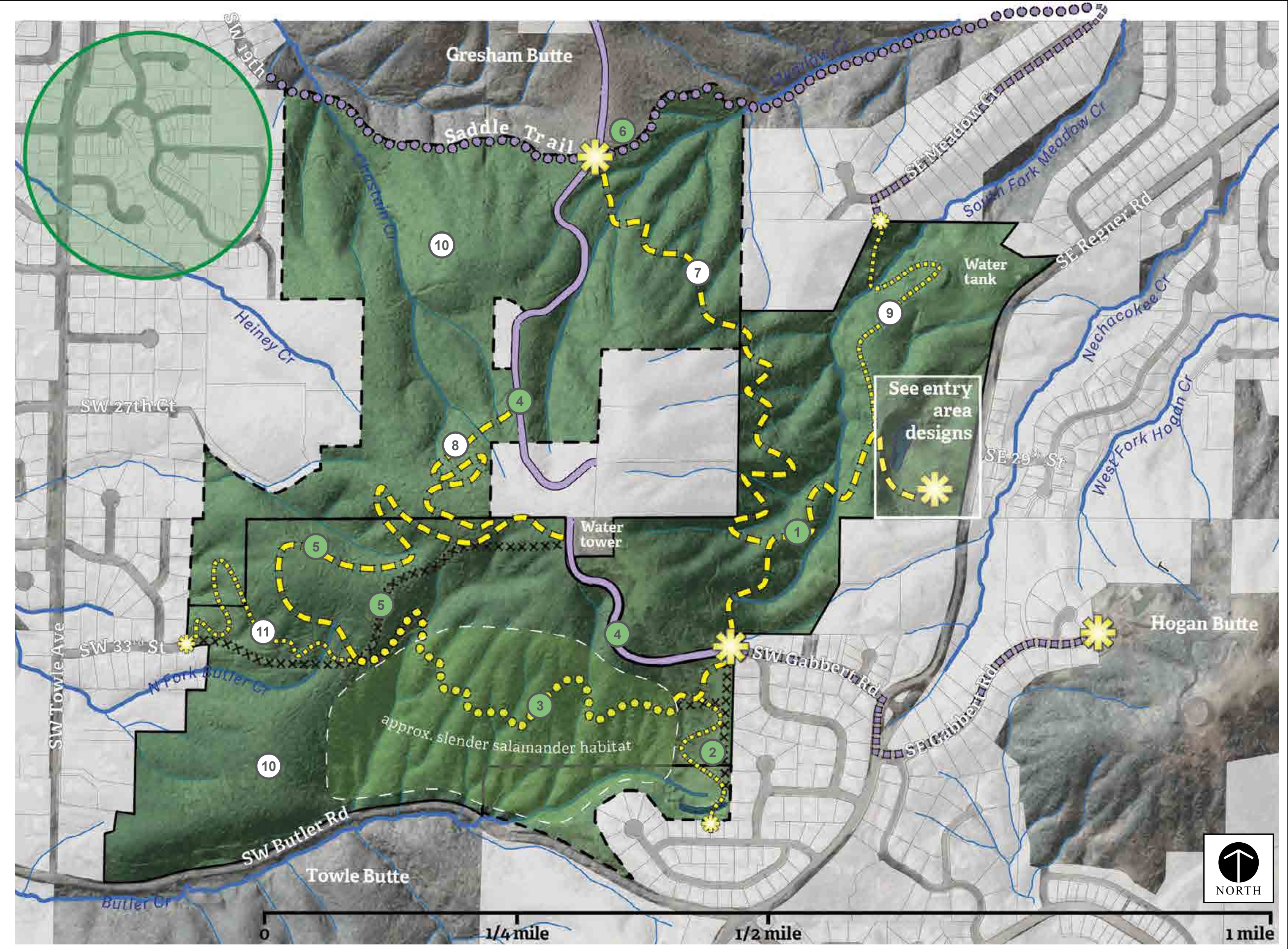
- 7 New trail connection between the top of Gabbert and the Saddle Trail on the west side of the butte.
- 8 On the east side of Gabbert, a new connection to SE Meadow Ct. provides a second (on-street) connection to the Saddle Trail.
- 9 SW 33rd St. neighborhood connection rerouted to the north of existing trail. This trail would be steeper than in alternative 3, but leaves more area undisturbed.
- 10 Although less than 30 acres, areas with no trails provide refuge areas for wildlife.



Trail Alignments 2

Key differences:

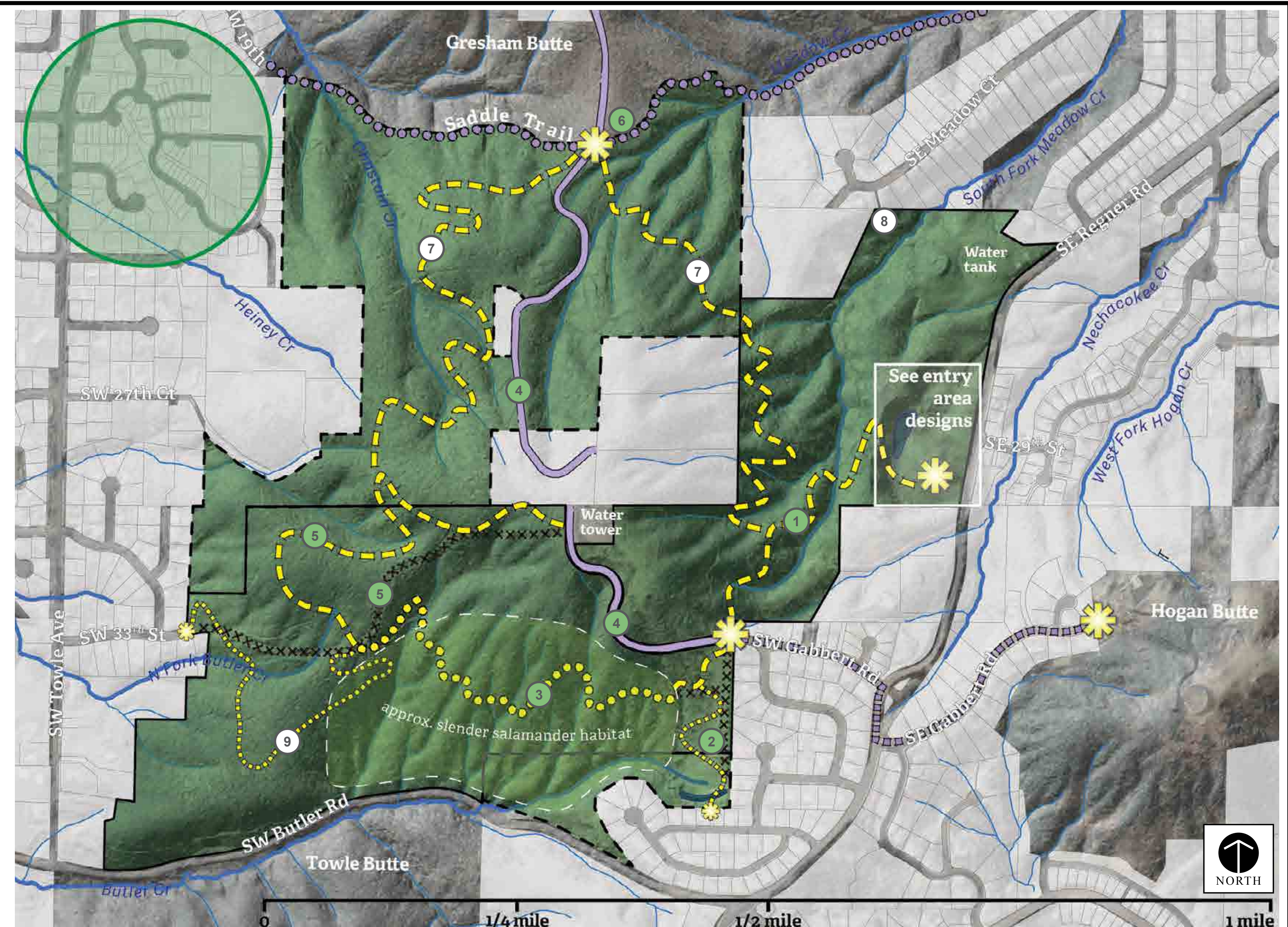
- 7 New trail connection between the entry area and the Saddle Trail on the east side of the butte, with no new connection on west side of Gabbert.
- 8 New trail connects top of butte to existing, steep right-of-way trail.
- 9 New neighborhood connection to SE Meadow Ct. provides a second (on-street) connection to the Saddle Trail.
- 10 Although less than 30 acres, areas with no trails provide refuge areas for wildlife.
- 11 SW 33rd St. neighborhood connection rerouted to the north of existing trail. This trail would be steeper than in alternative 3, but leaves more area undisturbed.



Trail Alignments 3

Key differences:

- 7 Two new trail connections to the Saddle Trail. On the west side of the butte a new trail connects to the top of Gabbert, and on the east side, a new trail connects to the entry area.
- 8 No connection to SE Meadow Ct.
- 9 SW 33rd St. neighborhood connection rerouted to the south of existing trail. This trail would have a gentler grade than alternatives 1 & 2, but disturbs more area.



Legend

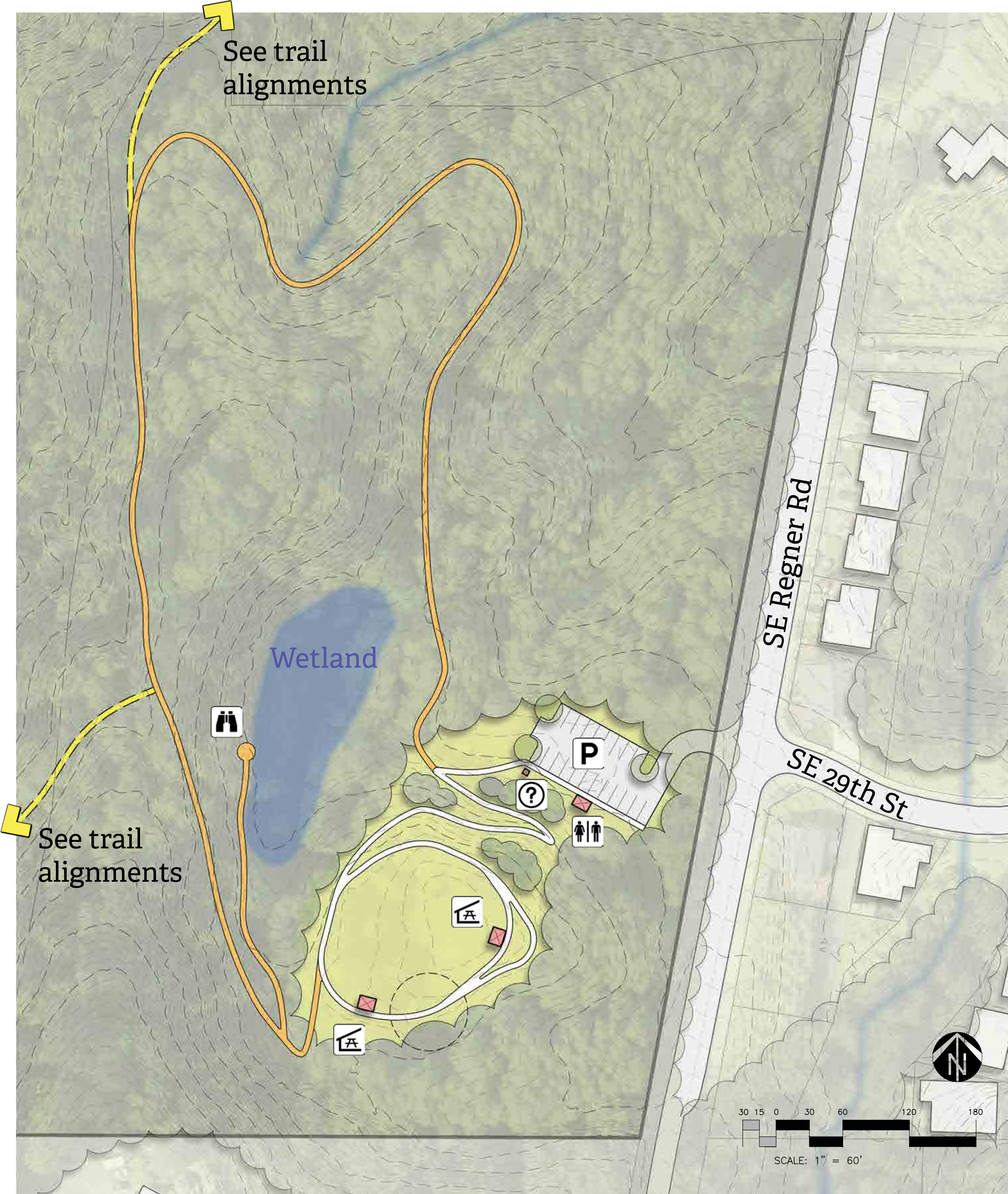
- Trail planning area
- Other public land
- Private land
- Wetland or swale
- Streams
- Drainages
- City of Gresham managed right-of-way
- Existing City managed trail
- Connection along existing road
- Existing trail to upgrade
- Proposed new multi-use trail
- Proposed new neighborhood connector trail
- Proposed trail closure
- Starting place or destination
- Neighborhood connection

30 acres

In general 30 acres is considered a minimum "large" patch size, a threshold where sensitive wildlife are able to live. Some species require much larger habitat patches.

In the context of the East Buttes complex, Gabbert Butte has smaller patch sizes. The East Buttes natural areas south of Butler Road have larger habitat patches and have been prioritized for conservation in the East Buttes Complex Site Conservation Plan.

Design 1 - Play and exploration

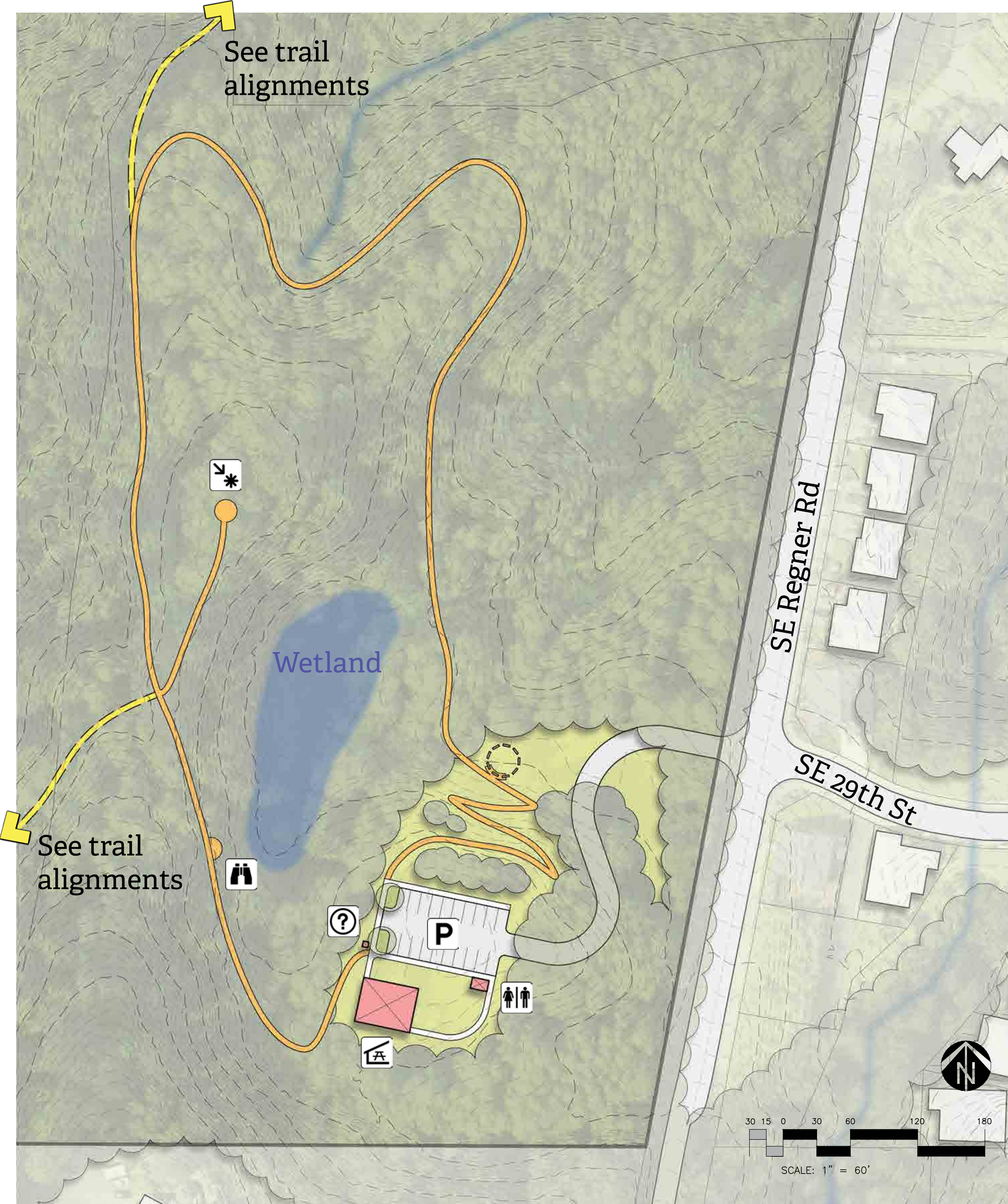


- Legend**
- Entry area loop
 - Nature trail
 - Multi use trail
 - P Parking
 - Restroom
 - Picnic area
 - Kiosk
 - Viewpoint / point of interest
 - Meadow
 - Off trail play / exploration

This design focuses on family play and exploration:

- Parking, restrooms and information kiosk are located directly across from SE 29th Ave.
- An accessible uphill path connects to an area with small picnic shelters, an off-trail play/exploration area, and a short loop path around a meadow.
- Approximately 1/2 mile long, a nature trail loop provides a nature experience that is accessible for families with young children, strollers, or wheel chairs. A trail spur leads to a wetland viewing area.
- For those looking for more challenge, the nature trail connects to the broader Gabbert Butte trail system.

Design 2 - Celebration and storytelling

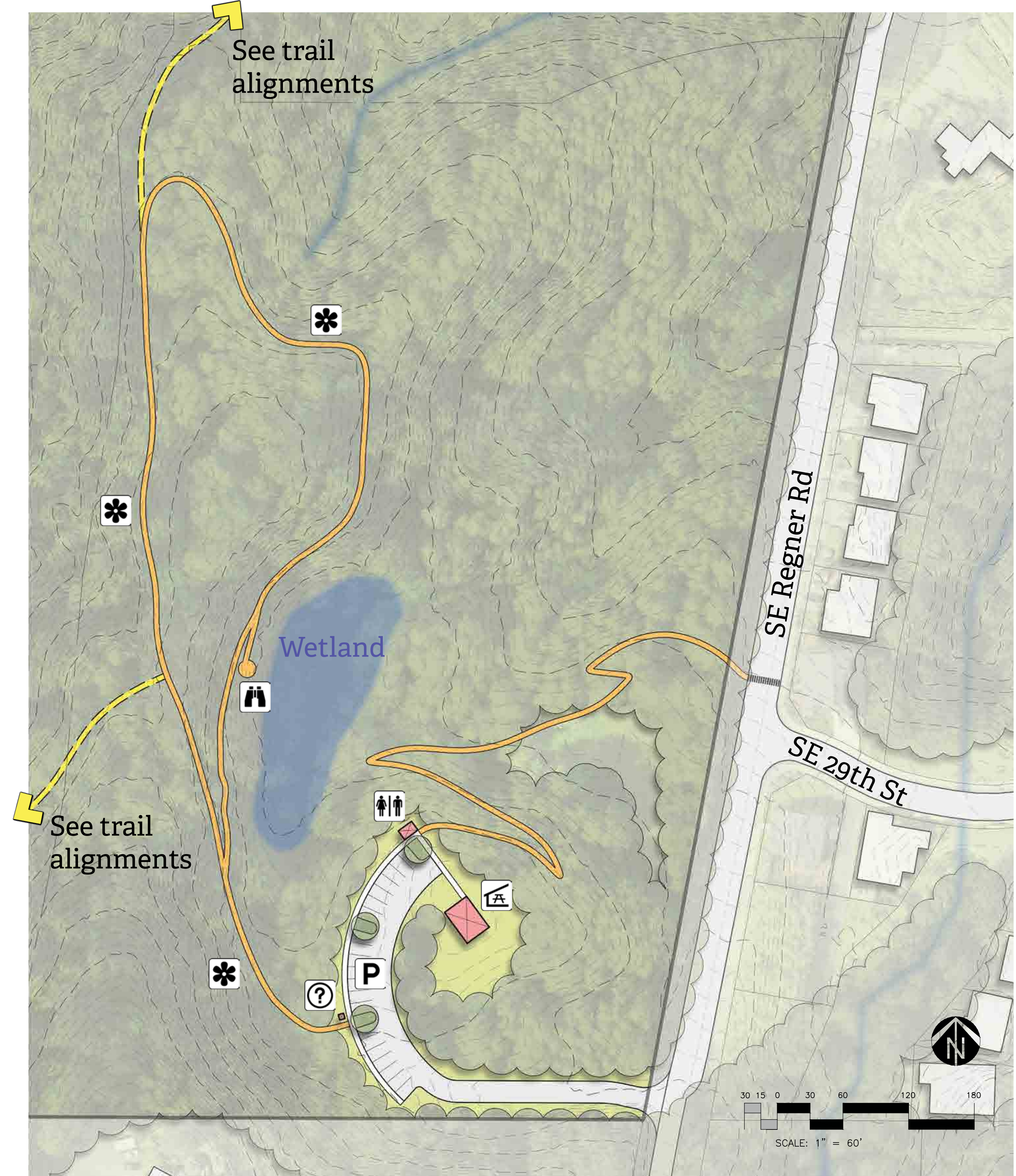


- Legend**
- Entry area loop
 - Nature trail
 - Multi use trail
 - P Parking
 - Restroom
 - Picnic area
 - Kiosk
 - Viewpoint / point of interest
 - Quiet place for prayer / reflection
 - Meadow
 - Story circle

This design focuses on community celebration and storytelling:

- Access to the site is directly across from SE 29th Ave.
- A meandering entry drive leads to parking, restrooms, information kiosk, and a picnic shelter, which are grouped together.
- Approximately 1/2 mile long, a nature trail loop provides a nature experience that is accessible for families with young children, strollers, or wheel chairs.
- The nature trail connects visitors to a wetland overlook, a story circle, a high point above the wetland, as well as the broader Gabbert Butte trail system.

Design 3 - Nature discovery



- Legend**
- Entry area loop
 - Nature trail
 - Multi use trail
 - P Parking
 - Restroom
 - Picnic area
 - Kiosk
 - Viewpoint / point of interest
 - Meadow
 - Plant identification station

This design focuses on nature discovery:

- Access to the site is via a more southerly entry road.
- An accessible trail provides pedestrian access to the communities east of Regner Rd.
- Parking, restroom, information kiosk, and a picnic shelter are grouped together.
- Approximately 1/3 mile long, a nature trail loop provides a nature experience that is accessible for families with young children, strollers, or wheel chairs. A short spur leads to a wetland viewing area.
- Interpretive signs identify common native plants.
- For those looking for challenge, the nature trail connects to the broader Gabbert Butte trail system.